



CRISTINA STORY

640 PLAZA DRIVE, SUITE 170 HIGHLANDS RANCH, COLORADO 80129
(303) 350-4090

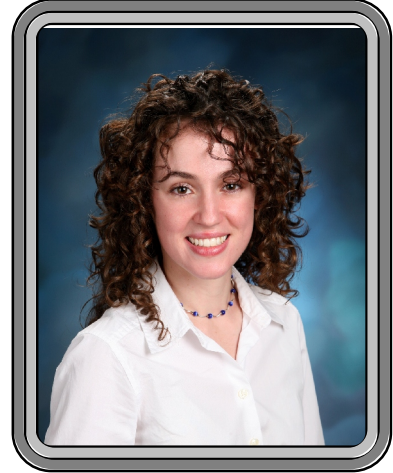
POSITION

Staff Hydrogeologist, Lytle Water Solutions^{LLC}

EDUCATION

B.S., Earth Sciences, Syracuse University, Syracuse, NY, 2007.

M.S., Hydrology, Colorado School of Mines, Golden, CO, 2009.



PROFESSIONAL AFFILIATION

American Water Works Association

PROFESSIONAL EXPERIENCE

Lytle Water Solutions, LLC, Highlands Ranch, Colorado: April 2009 to Present.

PROJECT EXPERIENCE

Ms. Story's experience includes various applications of ground water and chemical modeling software such as MODFLOW, PHREEQC, and MT3D. She has experience modifying species transport model software packages such as MT3D. She utilized the Integrated Decision Support System Consumptive Use model (IDSCU) for augmentation and municipal water supply planning projects, and has been involved in the permitting process for an aquifer storage and recovery project in Cheyenne, Wyoming. Ms. Story has also reviewed current water rights decrees for various projects.

Prior to joining Lytle Water Solutions (LWS), Ms. Story was employed as a graduate teaching assistant while pursuing a Master's Degree in Hydrology at Colorado School of Mines (CSM). While undertaking graduate level research, she worked closely with the US Geological Survey. Her research at CSM focused on the cumulative and temporal impacts of mine drainage containing high concentrations of heavy metals on alpine, aquatic invertebrate communities. Ms. Story installed piezometers along a reach of Leavenworth Creek in Clear Creek County, Colorado. After collecting

PROJECT EXPERIENCE *(Continued)*

surface and vadose zone water samples, she investigated the effects of mixing in the vadose zone on the overall toxicity to aquatic invertebrates. Ms. Story collected invertebrate samples to determine the number of metal-tolerant species present using the Invertebrate Data Analysis System. The goal of her research was to gain insight into the dynamic relationship between heavy metal contamination from mine drainage and vadose zone mixing on toxicity to aquatic systems.

Ms. Story gained additional field experience at the Branson Field Laboratory. There Ms. Story conducted tracer tests on the Popo Agie River in the Wind River Range, Wyoming, to evaluate river flow dynamics in a karst system. She also has field experience with geologic mapping and watershed-scale modeling using the software package WARMF.